



WHAT IS THE ATHABASCA IWMP?

AWC MUNICIPAL FORUM

NOVEMBER 17, 2018

WESTLOCK

WATER MANAGEMENT - WHERE HAVE WE BEEN?

Pre-2003 Drivers:

- Alberta 1905 (pop. 160,000); 2005 (pop. 3.3 M): 100 years as 'hewers of wood, drawers of water'
- 1992, 1997 – Bow River Basin Council, NSWA formed
- 2000/01 – Walkerton & North Battleford water crisis
- 2001 - Height of multi-year drought
- 2006 – South Saskatchewan River Basin Water Management Plan approved
- Changing resource management philosophy?
- Political alignment

WATER FOR LIFE STRATEGY (2003)

Strategy Intent:



- Manage risk & balance the 3 legged stool:
 - *Safe, secure drinking water (social)*
 - *Healthy aquatic ecosystems (environment)*
 - *Reliable quality supplies for a sustainable economy (economic)*
- Give Albertans a forum to be engaged in:
 - Provincial policy advice - AWC
 - Regional adaptive management - WPACs
 - On the ground actions – WSG
- Avoid picking winners and losers

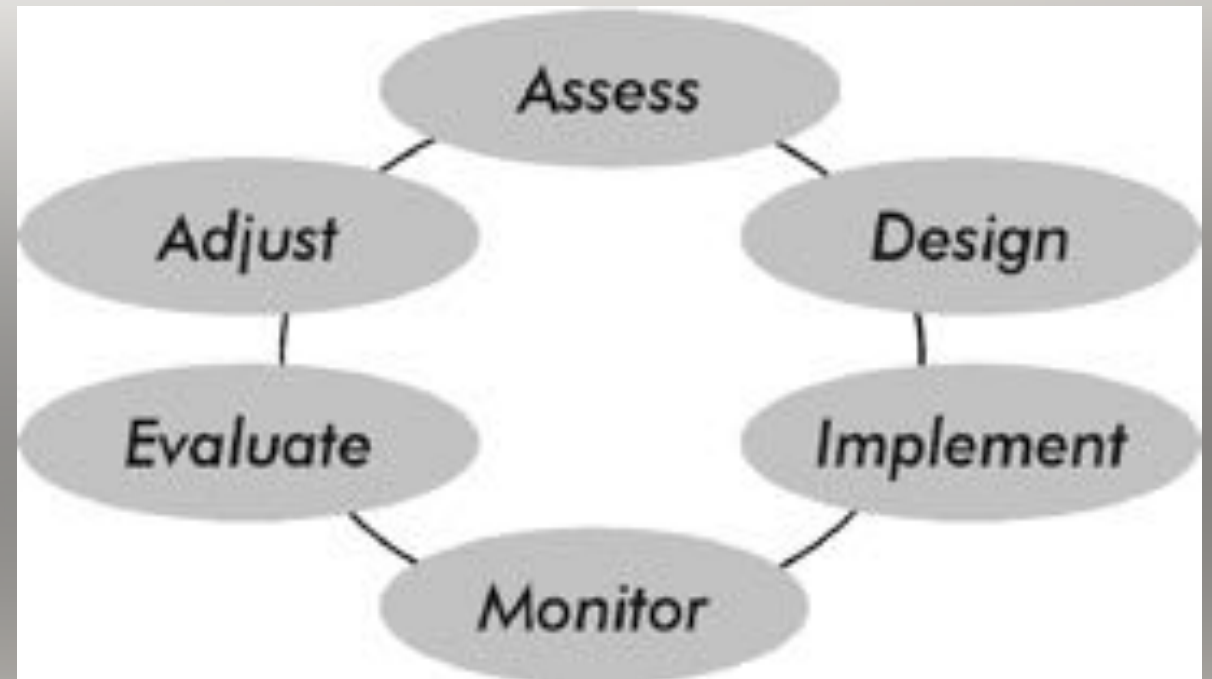
WATER FOR LIFE – A PARTNERSHIP APPROACH

- How will we partner? Who will do what?
- Regulatory authority vs decision-makers at the table
- Why **consensus**?
- Avoiding end-runs / back door bargaining



WATER FOR LIFE – 15 YEARS LATER!

- 6 Environment Ministers!
- Alberta Water Council investigated more than 20 policy areas; generated > 40 reports
- 11 Watershed Planning and Advisory Councils established (AWC est. 2009)
- Implement adaptive management



WATERSHED PLANNING AND ADVISORY COUNCILS

- important stewards of Alberta's major watersheds.
- independent, non-profit organizations that are designated by Alberta Environment and Parks to:
 - Be overseers of the adaptive management process
 - Report on the health of our watersheds via state of assessments
 - Lead collaborative planning; strengthen the consensus table
 - Build and share knowledge that informs decision-making
 - Facilitate education and stewardship activities

WHAT IS A WATERSHED MANAGEMENT PLAN?

- A **roadmap** to guide activities for a period of time in order to achieve a vision.
- A **commitment**: Who (responsibility, authority) will do what, why (rationale), by when (perhaps where, how)
- A **collaboration** between stakeholders/sectors
- A **series of discussions** leading to consensus

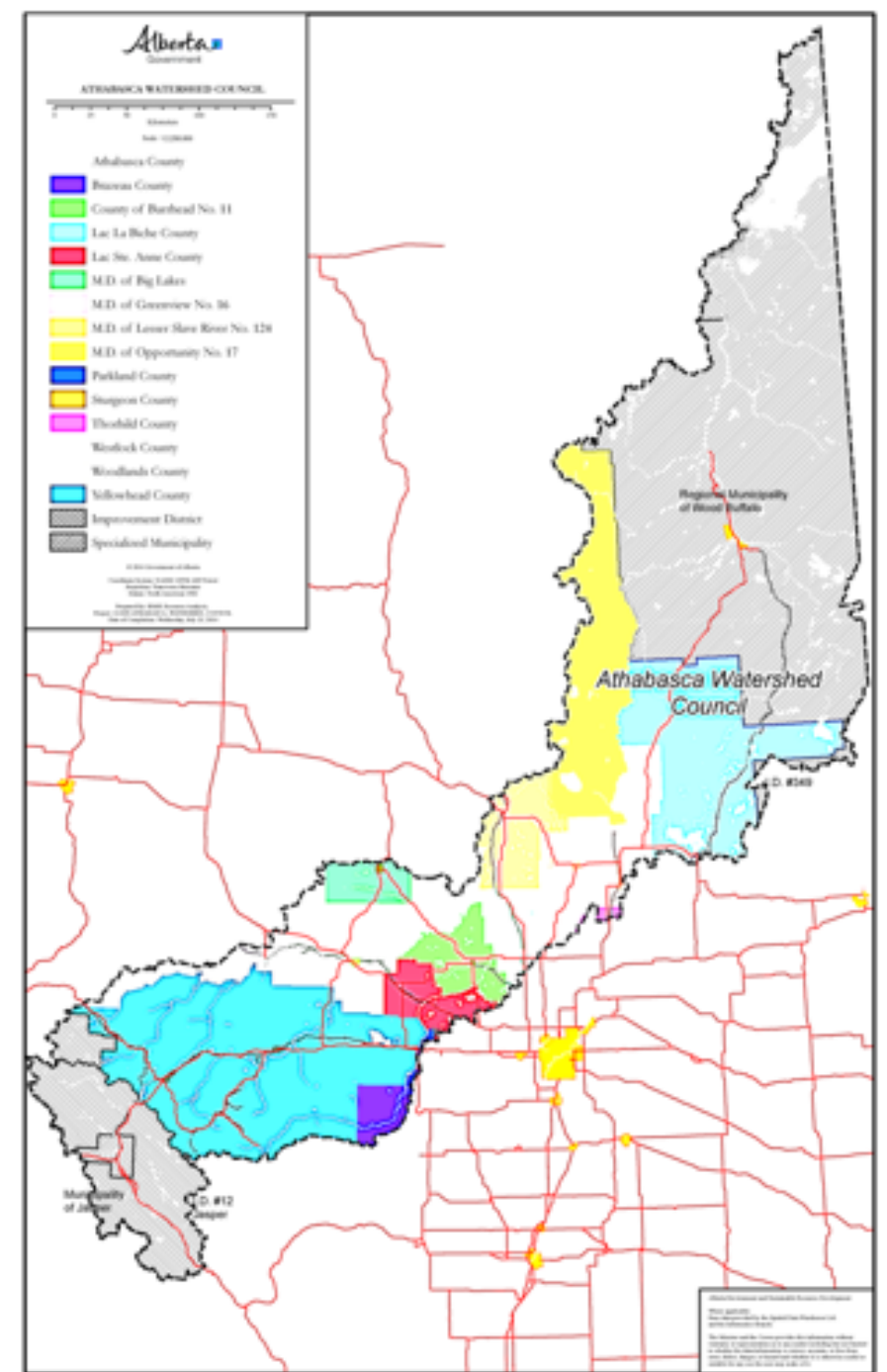
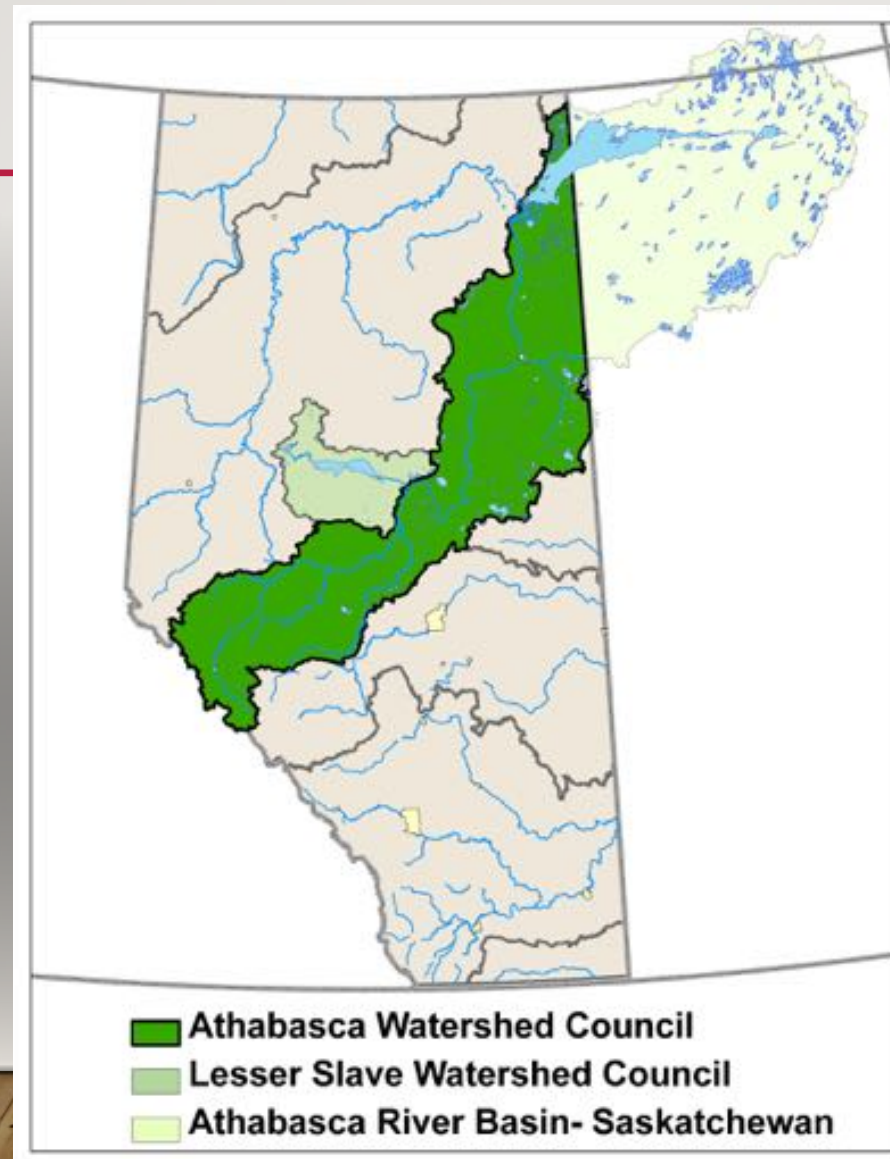
A WATERSHED MANAGEMENT PLAN ANSWERS:

1. **Where are we at today?** - state of, other reports/policies/events
2. **Where do we want to be in the future?** - vision, goals, outcomes
3. **What is standing in our way?** - issues / information gaps
4. **How will we get there?** - solutions, opportunities, strategies, actions
5. **How will we know when we've arrived?** - performance indicators

WHAT IS A WATERSHED MANAGEMENT PLAN?

- A plan usually includes (but is not limited to) looking at:
 - **Surface and ground water quality** (source and treated drinking water, ag/industry, recreation, aquatic life)
 - **Surface and ground water quantity** (flow/level, instream flow needs, allocations)
 - **Aquatic ecosystem health** (fish and other biodiversity, wetlands, riparian lands, flood plains)
 - **Land cover and land use** (from a point and non-point pollution point of view)
 - **Policy and planning** (regulations, enforcement, etc.)
 - **Information-gathering, knowledge-building, education, stewardship**

THE ATHABASCA IWMP



WHERE?

- Recognize Issues of Scale (geographic and political)

- mandate is for the Athabasca watershed (within Alberta)
 - Not including but recognizing the role of Lesser Slave Watershed Council
 - Recognize the role of Mackenzie River Basin Master Agreement
- Issues may be specific to regions and/or sectors (Upper-forestry, middle-agriculture, lower-energy)
- Also need to recognize other initiatives
 - Upper and Lower Regional Plans,
 - Municipal plans (ICF, IDP, MDP, LUB, ASP, etc.)
 - Sub-basin and stewardship initiatives (Pembina, Baptiste Lake, Lac La Biche, etc.)

Provincial



Local

Watershed Planning

Land use Planning

Water for Life

Land Use Framework

Watershed Plans

Regional Plans

Drinking Water Safety
Plans

**Source
Water
Protection**

Municipal Development
Plans

Stormwater
Management Plans

(Integrating
land and water
management)

Local Area Plans

Master Drainage Plans

Development Permits

WHEN?

- The Athabasca IWMP will be forward-looking:
 - ▶ 25 year vision
 - ▶ 5-10 year action plan
- Will be iterative and adaptive (living document):
 - Implementation reported on annually via AWC annual reports
 - Reviewed every 5 years, or if something changes significantly
 - Renewed after 10 years

WHO?

- Who is championing the plan?
- Who will be the keeper of the plan (report on annual progress)?
- Who else do we need to talk to?
 - Who has water issues?
 - Who can we collaborate with?
- How will we represent our sectors?
 - Bringing viewpoints to the planning table
 - Communicating progress back to constituents
 - Getting sector approval

IWMP ROLES AND RESPONSIBILITIES

- AWC Board
 - 3 municipal members
- Technical Committee
 - Chair Dan Moore
 - Municipal Committee Members
 - Robert Esau, MD of Lesser Slave Lake
 - Larry Armfelt, Athabasca County
 - Sterling Johnson, Lac La Biche County

WHAT'S IN THE IWMP?

- Water for Life
 - Safe, secure drinking water,
 - Healthy aquatic ecosystems, and
 - Reliable, quality supplies for a sustainable economy.
- AWC
 - *Vision: The Athabasca watershed is ecologically healthy, diverse and dynamic.*

ISSUES, GAPS, OPPORTUNITIES

What is standing in the way of achieving our vision?

What are the issues, info gaps?

What opportunities are available to assist us with achieving our vision?

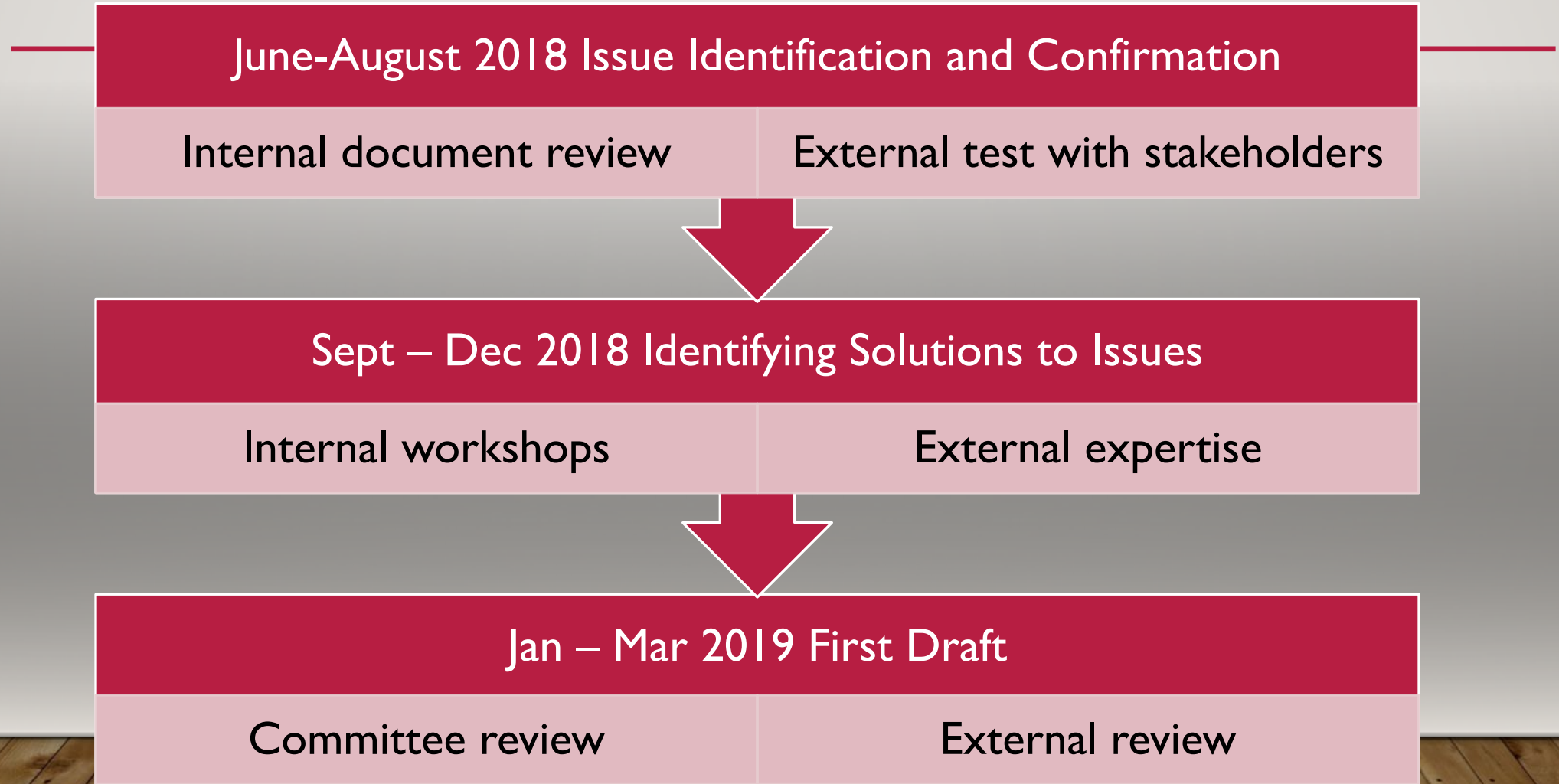
MEETING SCHEDULE?



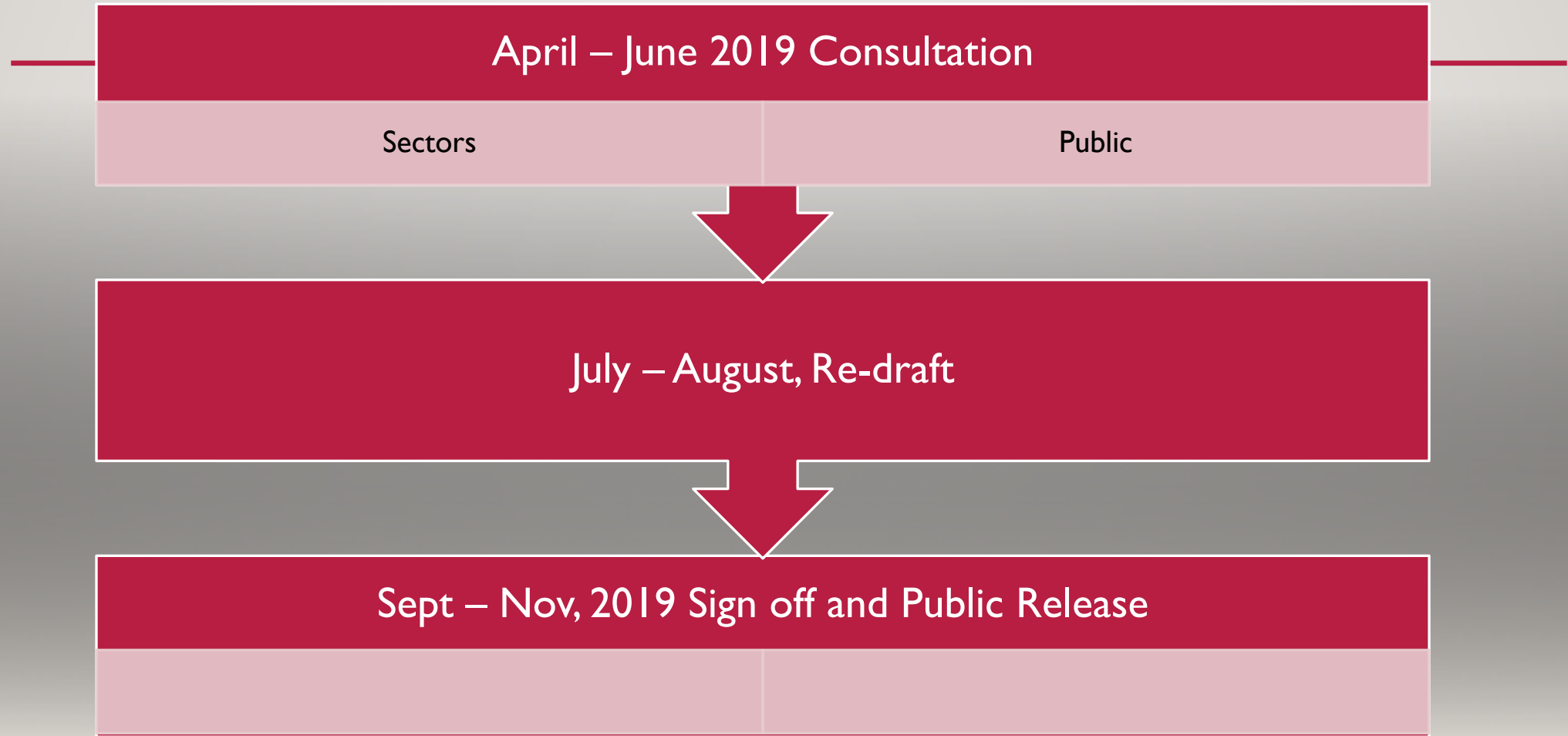
May 6/18

Nov./19

PROCESS TIMELINE



PROCESS TIMELINE



KEY THEMES SO FAR?

- Everyone in the watershed has safe, secure drinking water.
- Both surface and groundwater resources are understood and managed sustainably.
- Aquatic ecosystems are healthy and biological diversity is conserved.
- Reliable water supplies are available for a sustainable economy now and in the future.
- Natural land cover is conserved, and cumulative land use pressures are mitigated.

FINDINGS SO FAR

- Policies and plans are aligned and integrated for watershed health.
- Watershed research, monitoring and assessment informs decision-making.
- The impact of a changing climate on the Athabasca watershed is understood.
- Education and outreach programs engage stakeholders for effective stewardship actions.
- Sub-watershed and lake planning and stewardship initiatives are supported.

GETTING YOUR FEEDBACK!

- World Café Exercise

PLENARY SHARING

- How should the AWC engage you in the IWMP process?
- How should we engage your councils?
- How should we engage your constituencies?
- What do you hope to see in the Athabasca integrated watershed management plan?

Thank you for providing your feedback on the Athabasca IWMP!

